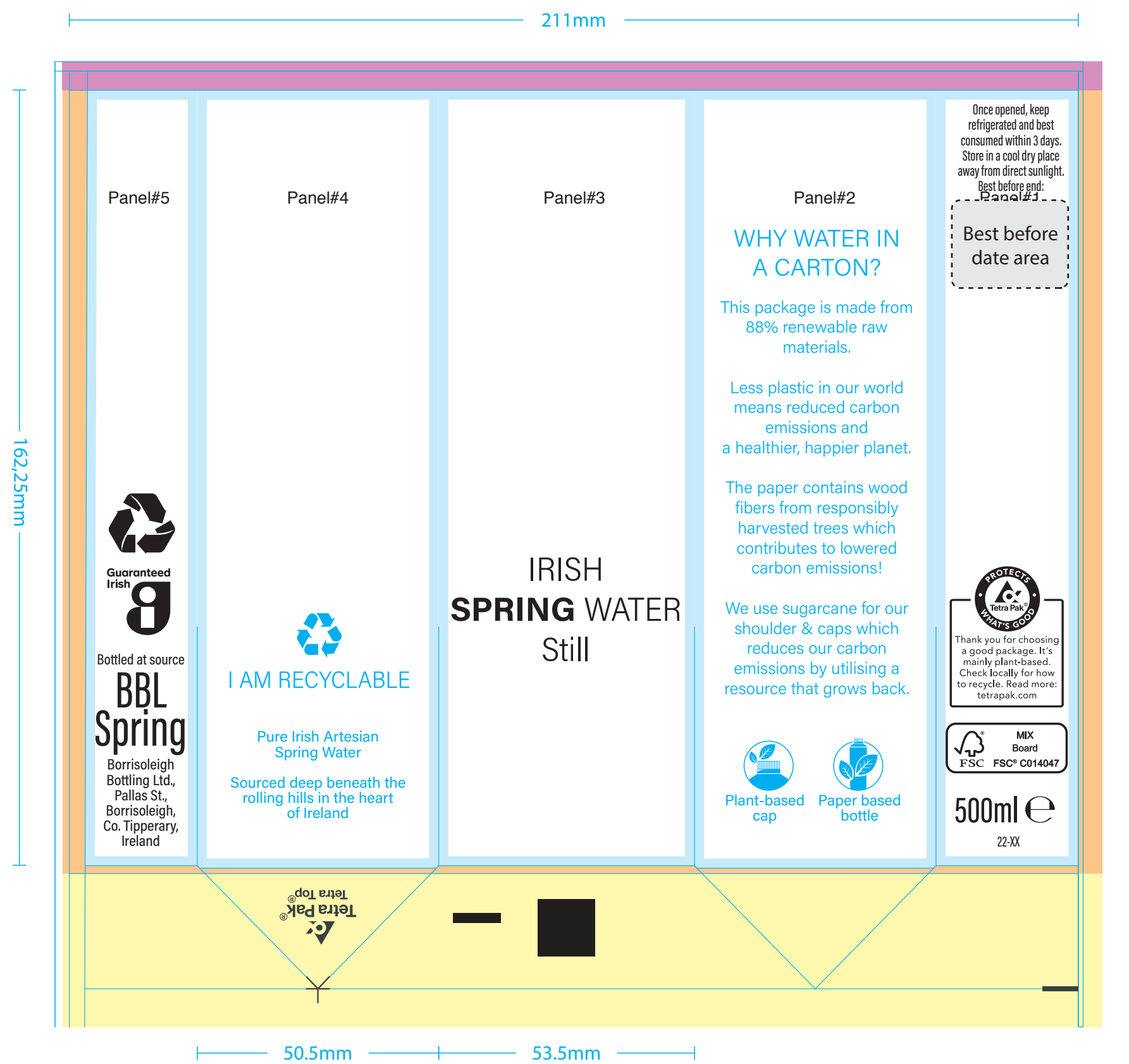




Tetra Top® 500 Midi 1IC
Keyline no: 2106

Keyline Colour coding

- Area for customer logos and legal text
- Print free area
- Not visible area after folding
- Safety distance from creasing lines
- Area matching lid colour



About this Keyline file

This new Keyline has been created to support you in the development of your package design. There are several differences which are important in helping improve the process from creation through to commercialisation.

We ask that you utilise the new layer structure by adding your design artwork into the Job layers and all sub-elements in the respective sub-layers for text, logos, images, background.

We strongly advise you to ensure the specified locked layers remain locked to prevent unwanted moving of creasing lines.

Please note:

The design is not masked to the borders and your images and background can extend outside of the design area. Tetra Pak will add masks during the process of converting your artwork into a Tetra Pak ready production file.

For further information on how to save the your keyline for optimal conversion from artwork to production can be found the Tetra Pak Design Manual available from your local representative.

Additional Information:

Tetra Pak is able to provide a broad range of knowledge and information to support you in the process of designing for Tetra Pak packages to meet the needs of different Consumers and product Categories.

From trend analysis to design briefings, Tetra Pak Marketing Services can support you in developing new products, packages and brand designs giving you access to experience and expertise from Tetra Pak design professionals.

Panel#5

Panel#4

Panel#3

Panel#2

Once opened, keep refrigerated and best consumed within 3 days. Store in a cool dry place away from direct sunlight.

Best before end: Panel#1

Best before date area

WHY WATER IN A CARTON?

This package is made from 88% renewable raw materials.

Less plastic in our world means reduced carbon emissions and a healthier, happier planet.

The paper contains wood fibers from responsibly harvested trees which contributes to lowered carbon emissions!

We use sugarcane for our shoulder & caps which reduces our carbon emissions by utilising a resource that grows back.



Plant-based cap



Paper based bottle

IRISH SPRING WATER Still



I AM RECYCLABLE

Pure Irish Artesian Spring Water

Sourced deep beneath the rolling hills in the heart of Ireland



Guaranteed Irish



Bottled at source

BBL Spring

Borrisoleigh Bottling Ltd., Pallas St., Borrisoleigh, Co. Tipperary, Ireland



Thank you for choosing a good package. It's mainly plant-based. Check locally for how to recycle. Read more: tetrapak.com



500ml e

22-XX

Panel#5

Panel#4

Panel#3

Panel#2

Once opened, keep refrigerated and best consumed within 3 days. Store in a cool dry place away from direct sunlight.

Best before end: Panel#1

Best before date area

WHY WATER IN A CARTON?

This package is made from 88% renewable raw materials.

Less plastic in our world means reduced carbon emissions and a healthier, happier planet.

The paper contains wood fibers from responsibly harvested trees which contributes to lowered carbon emissions!

We use sugarcane for our shoulder & caps which reduces our carbon emissions by utilising a resource that grows back.



Plant-based cap



Paper based bottle

IRISH SPRING WATER Still



I AM RECYCLABLE

Pure Irish Artesian Spring Water

Sourced deep beneath the rolling hills in the heart of Ireland



Guaranteed Irish



Bottled at source

BBL Spring

Borrisoleigh Bottling Ltd.,
Pallas St.,
Borrisoleigh,
Co. Tipperary,
Ireland



Thank you for choosing a good package. It's mainly plant-based. Check locally for how to recycle. Read more: tetrapak.com



500ml e

22-XX